

LUFFING JIB TOWER CRANE

# RTL 265

A - 18 HR23/HP20<sub>I / II / FALLS</sub>

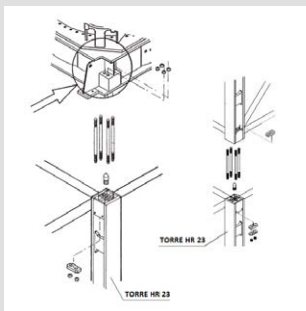
B - 18 HR23/HP20<sub>II / III / IV / FALLS</sub>

TECHNICAL DATA SHEET



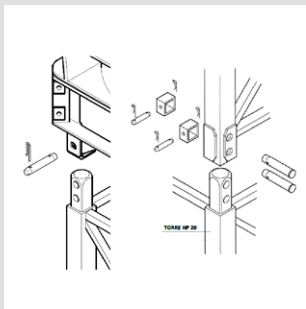
**RECOM**<sup>TM</sup>  
Moritsch





### TOWER TYPE HR 23

The well known H beam mast sections with vertical bolts connection will allow greater free standing heights. Available in two versions, heavy duty (HR 23-26) and std duty type (HR 23-22).



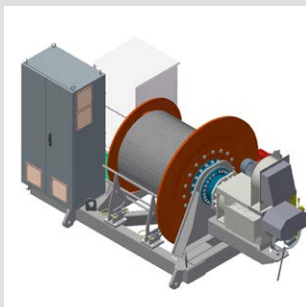
### TOWER TYPE HP 20

The famous boxed beams -twin pins connections. Safety and performances trough pins.



### CABIN

New design CAB , wider, longer, with improved visibility. Grammer seat and gessman joy-stick for driver cofort and ABB controls for maximum safety. USB door, air con, easy cleaning of windows, 10" or 6" screen included.



### WINCHES

New generation of high power winches, from 67 to 110 kw. New braking system, new reduction gear to grant highest performances ever seen on a luffer.

# RTL 265

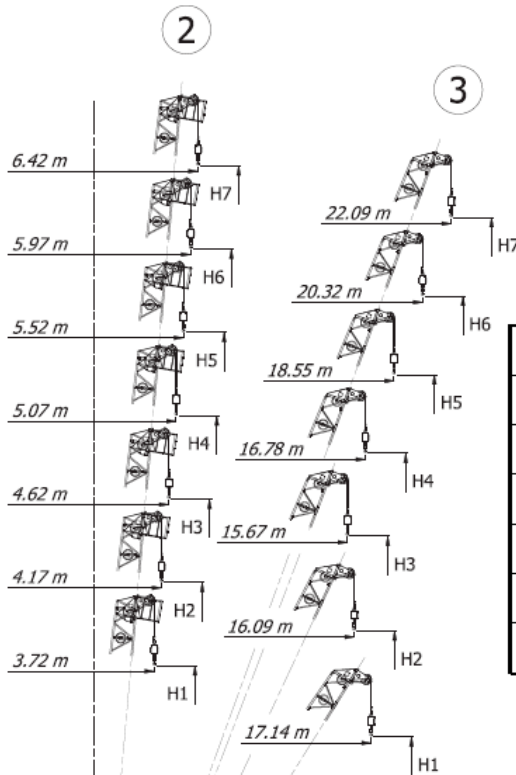
## A - 18 HR23/HP20 I / II / FALLS

TECHNICAL DATA SHEET

RTL 265 A - 18 HR23/HP20

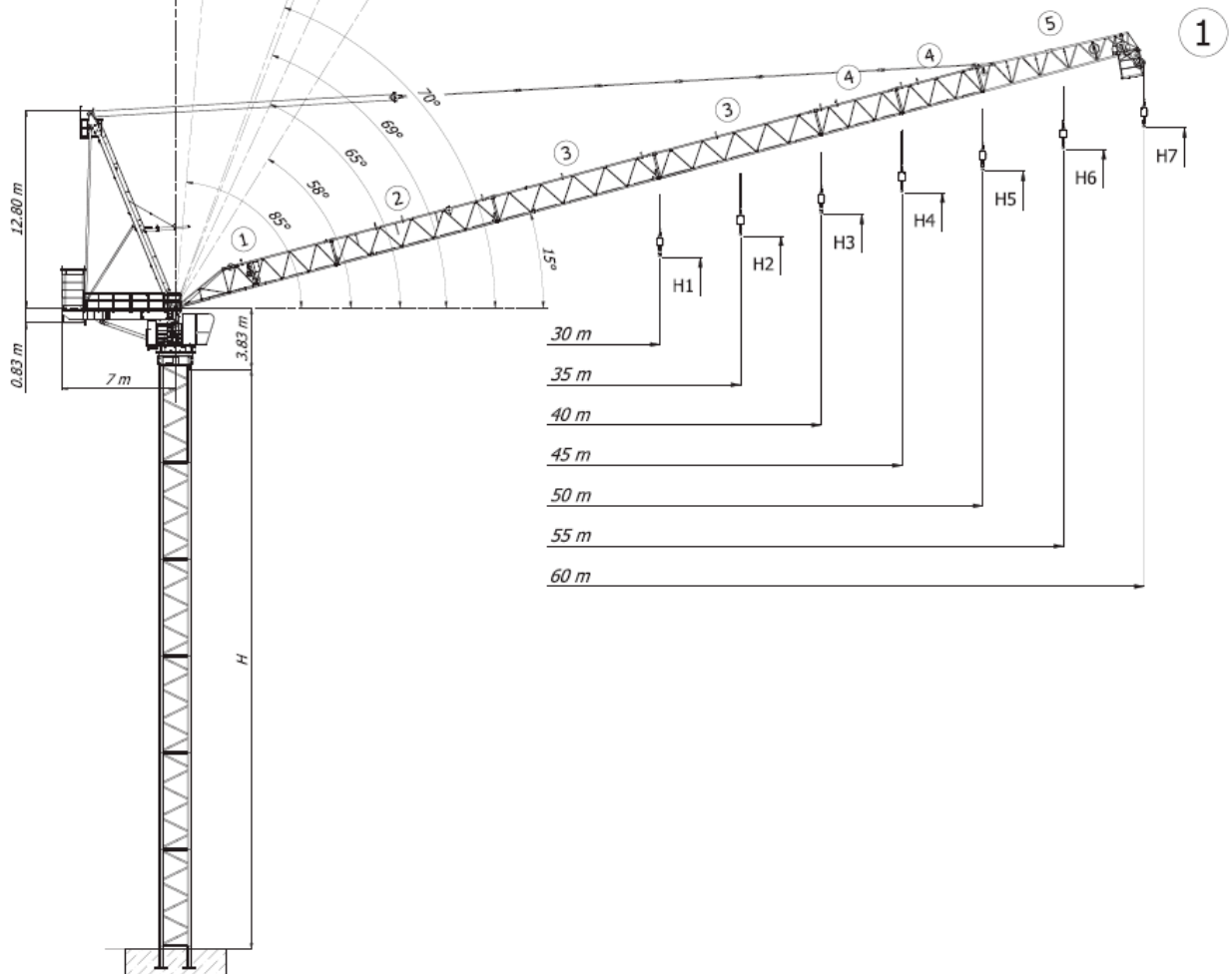
4

V4 - 11/17 - Subject to change without notice



EN 14439: 2009  
FEM 1.001 - A3

		1		2		3	
H1	30	I	H + 6,47	H + 26,2	H + 22,7		
		II		24,2	21,5		
H2	35	I	H + 7,81	H + 31,4	H + 28,9		
		II		29,4	27,5		
H3	40	I	H + 9,15	H + 36,6	H + 34,6		
		II		34,6	33,0		
H4	45	I	H + 10,49	H + 41,7	H + 39,6		
		II		39,7	38,1		
H5	50	I	H + 11,83	H + 46,9	H + 44,5		
		II		44,9	42,9		
H6	55	I	H + 13,17	H + 52,0	H + 49,4		
		II		50,0	47,8		
H7	60	I	H + 14,51	H + 57,2	H + 54,2		
		II		55,2	52,7		



RTL 265 A - 18

t	m	15	20	25	30	35	40	45	50	55	60		
9 t	27,75 m	t	9,00	9,00	9,00	7,99	6,33	5,08	4,12	3,34	2,70	<b>2,20</b>	
13,5 t	19,81 m	t	13,50	13,33	9,86	7,54	5,89	4,65	3,68	2,91	2,28	<b>1,80</b>	59,46 m
9 t	28,62 m	t	9,00	9,00	9,00	8,36	6,67	5,40	4,41	3,62	<b>3,00</b>		
16 t	17,78 m	t	16,00	13,80	10,26	7,90	6,22	4,96	3,97	3,18	<b>2,60</b>		54,46 m
9 t	31,67 m	t	9,00	9,00	9,00	9,00	7,79	6,41	5,33	<b>4,50</b>			
18 t	17,94 m	t	18,00	15,78	11,89	9,30	7,45	6,06	4,98	<b>4,20</b>			49,47 m
9 t	32,68 m	t	9,00	9,00	9,00	9,00	8,16	6,76	<b>5,70</b>				
18 t	18,32 m	t	18,00	16,20	12,28	9,66	7,79	6,39	<b>5,40</b>				44,47 m
9 t	33,52 m	t	9,00	9,00	9,00	9,00	8,47	<b>7,10</b>					
18 t	18,50 m	t	18,00	16,42	12,52	9,92	8,06	<b>6,80</b>					39,47 m
9 t	33,80 m	t	9,00	9,00	9,00	9,00	<b>8,60</b>						
18 t	18,55 m	t	18,00	16,48	12,58	9,99	<b>8,30</b>						34,47 m
9 t	30,00 m	t	9,00	9,00	9,00	<b>9,00</b>							
18 t	18,57 m	t	18,00	16,49	12,58	<b>10,20</b>							29,47 m

RTL 265 A - 18

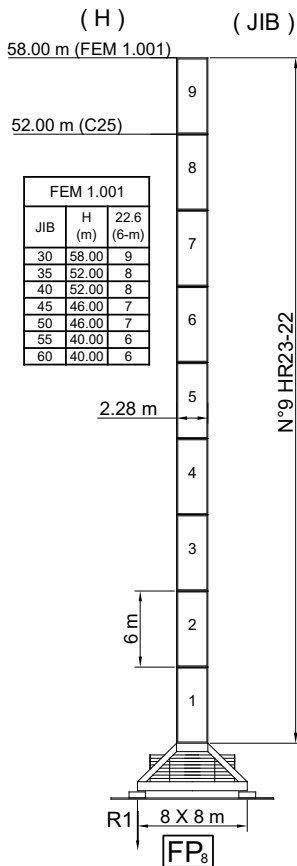
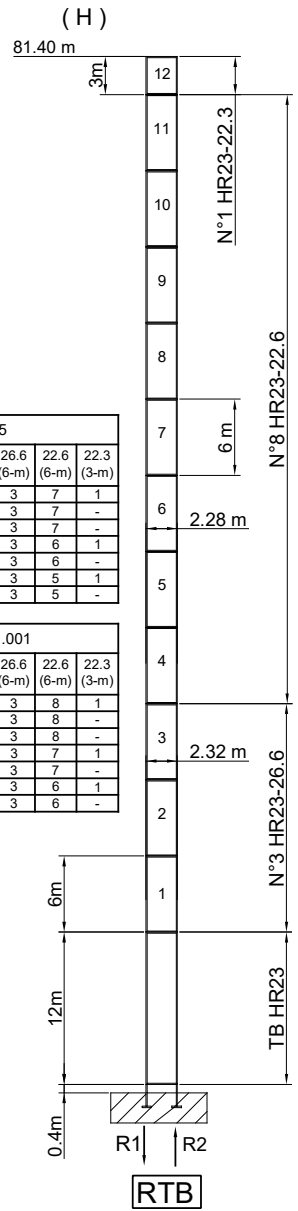
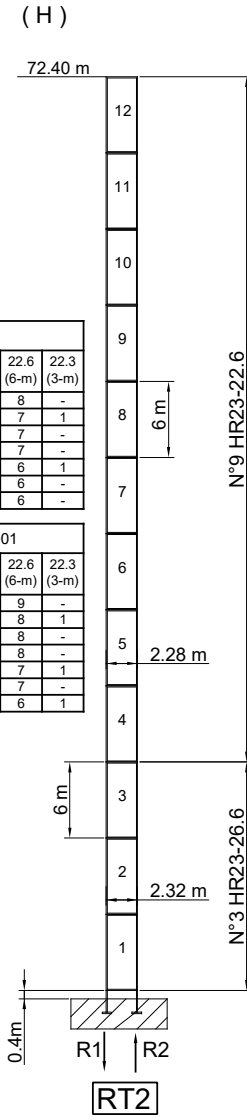
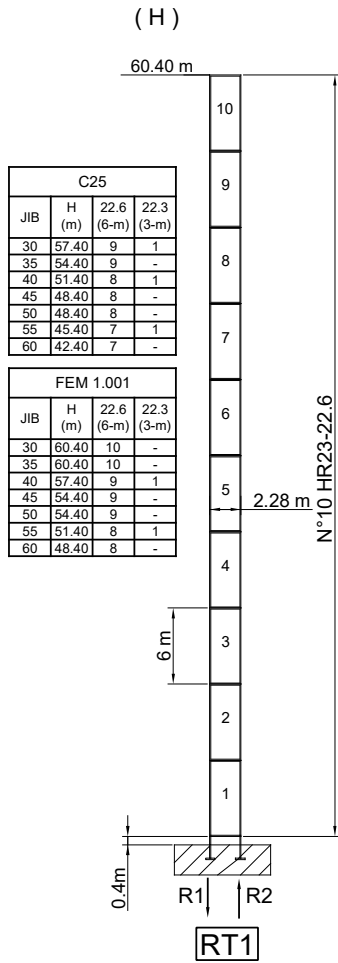
lb	ft	49,21	65,62	82,02	98,43	114,83	131,23	147,64	164,04	180,45	196,85		
19841,6	91,04 ft	lb	19842	19842	19842	17617	13956	11210	9072	7361	5959	<b>4850</b>	
29762,4	64,99 ft	lb	29762	29389	21736	16633	12987	10251	8122	6418	5021	<b>3968</b>	195,08 ft
19841,6	93,90 ft	lb	19842	19842	19842	18442	14709	11908	9727	7981	<b>6614</b>		
35273,9	58,33 ft	lb	35274	30418	22623	17426	13712	10925	8756	7019	<b>5732</b>		178,67 ft
19841,6	103,90 ft	lb	19842	19842	19842	19842	17166	14123	11754	<b>9921</b>			
39683,2	58,86 ft	lb	39683	34778	26218	20510	16431	13370	10986	<b>9259</b>			162,30 ft
19841,6	107,22 ft	lb	19842	19842	19842	19842	17987	14903	<b>12566</b>				
39683,2	60,10 ft	lb	39683	35714	27068	21301	17181	14087	<b>11905</b>				145,90 ft
19841,6	109,97 ft	lb	19842	19842	19842	19842	18665	<b>15653</b>					
39683,2	60,70 ft	lb	39683	36195	27605	21876	17780	<b>14991</b>					129,49 ft
19841,6	110,89 ft	lb	19842	19842	19842	19842	<b>18960</b>						
39683,2	60,86 ft	lb	39683	36323	27743	22018	<b>18298</b>						113,09 ft
19841,6	98,43 ft	lb	19842	19842	19842	<b>19842</b>							
39683,2	60,93 ft	lb	39683	36360	27734	<b>22487</b>							96,69 ft

Hoisting rope weight not included into the above chart - reduce the lifting performance with the following amount dependig on final crane height:

Rope weight:

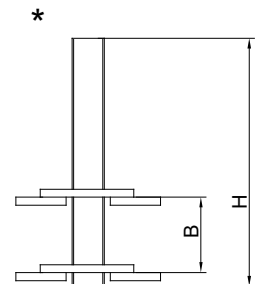
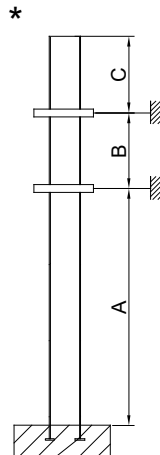
I FALL	2,383 kg/m →	1,60 lb/ft
II FALL	4,766 kg/m →	3,20 lb/ft

# HR23

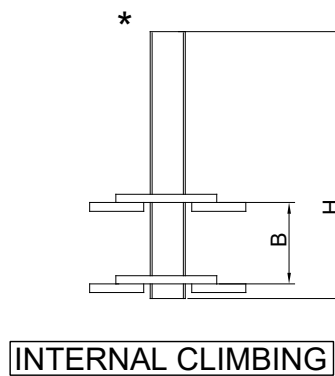
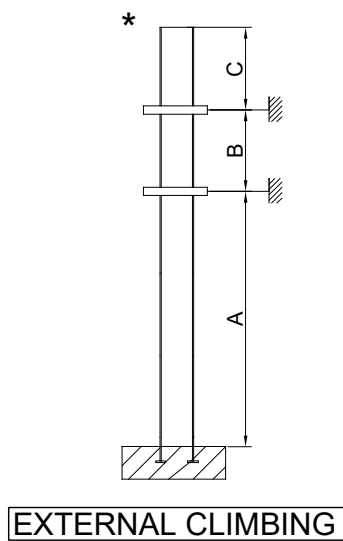
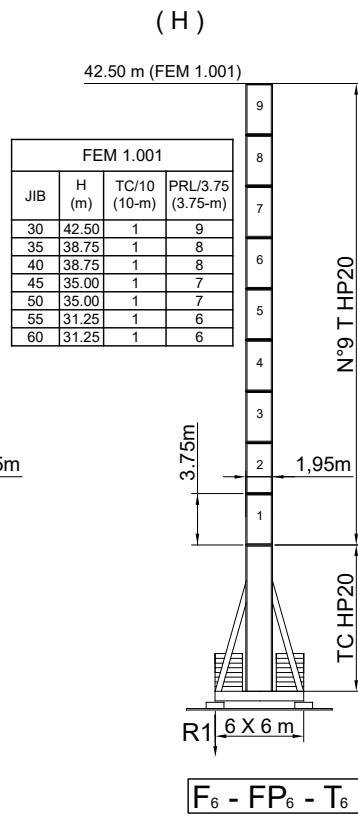
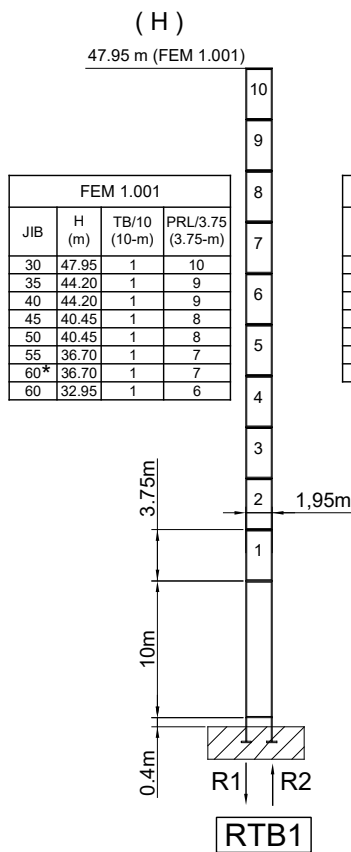
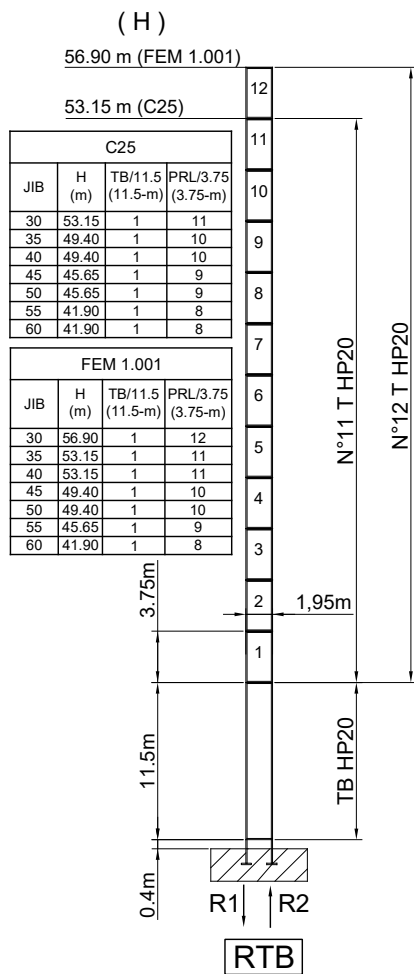


(C25) FEM 1.004 out of service wind conditions

Different height and tower combinations are available - please consult us



# HP20

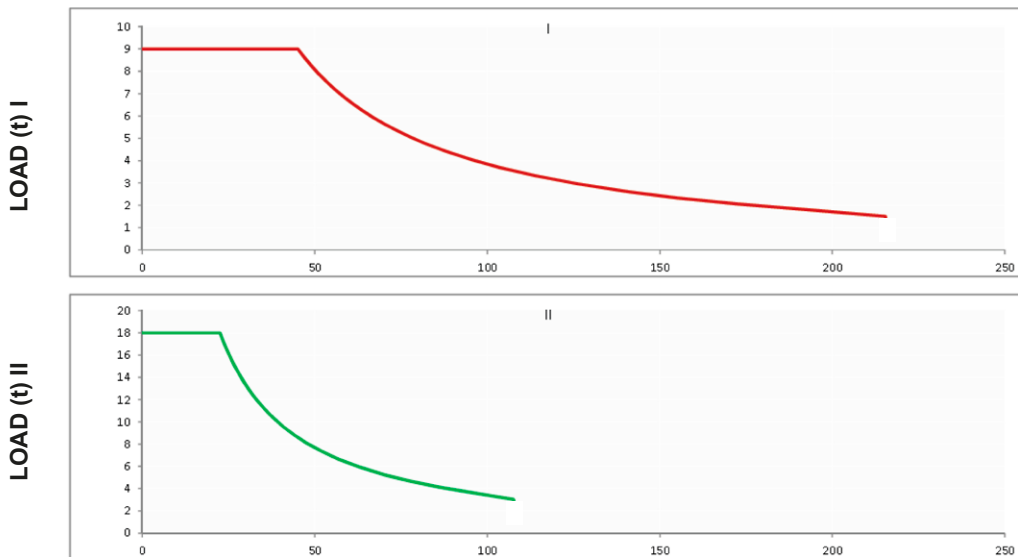


\* Please ask tech. Dept.

(C25) FEM 1.004 out of service wind conditions

Different height and tower combinations are available - please consult us

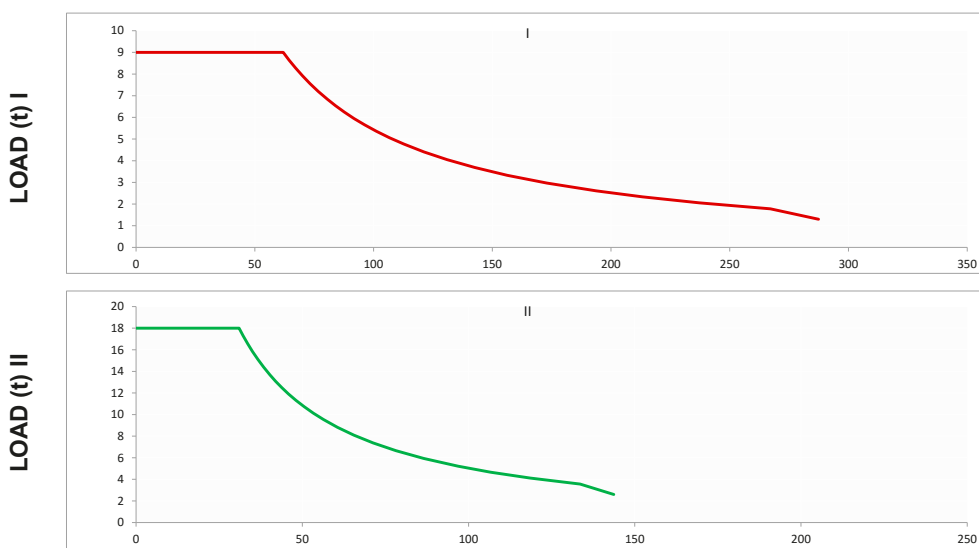
80 HVF 180



HOISTING

			t	m/min		kW	
	80 HVF 180		9	0	→	45	80
			7	0	→	58	
			4	0	→	97	
			1,3	0	→	215	
			18	0	→	22,5	
			14	0	→	29	
			8	0	→	48	
			2,6	0	→	107	

110 HVF 180



HOISTING

			t	m/min		kW	
	110 HVF 180		9	0	→	62	110
			7	0	→	77	
			4	0	→	130	
			1,3	0	→	275	
			18	0	→	31	
			14	0	→	38	
			8	0	→	65	
			2,6	0	→	135	

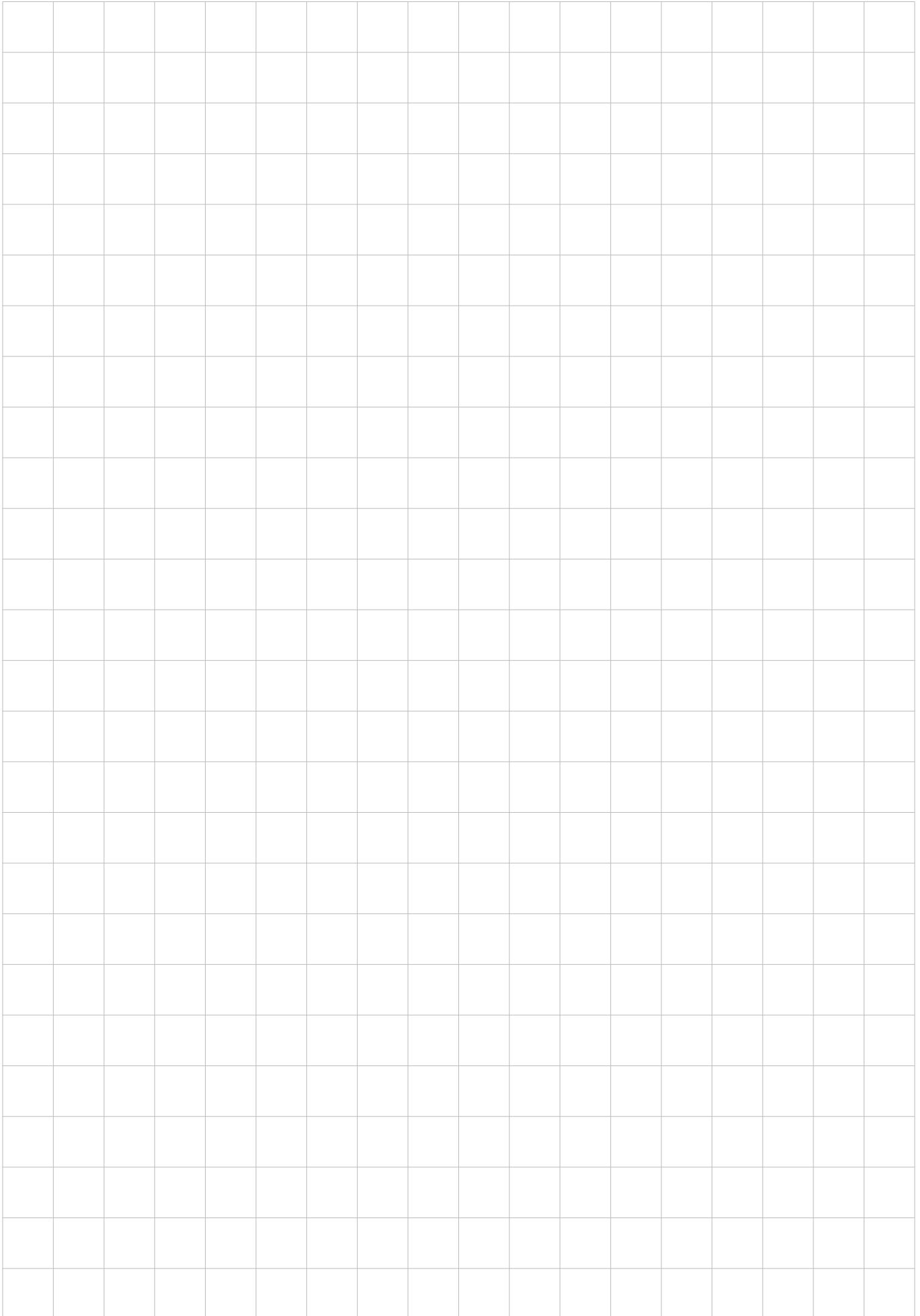
Hoisting Winch 80 kW Max rope on drum: 850 m  
 Hoisting Winch 110 kW Max rope on drum: 850 m

Luffing Winch 67 kW 15° → 85° = 1.8 min.

Slewing 2 x 11.0 kW 0.70 rpm

Machine rating L67kW H80kW : 220 kVA  
 L67kW H110kW : 325 kVA







**RECOM S.R.L.**

via Vittorio Veneto 158/b  
32100 Belluno | BL | Italy  
T. +39 0437 1840396  
info@recomcranes.it  
[www.recomcranes.it](http://www.recomcranes.it)

