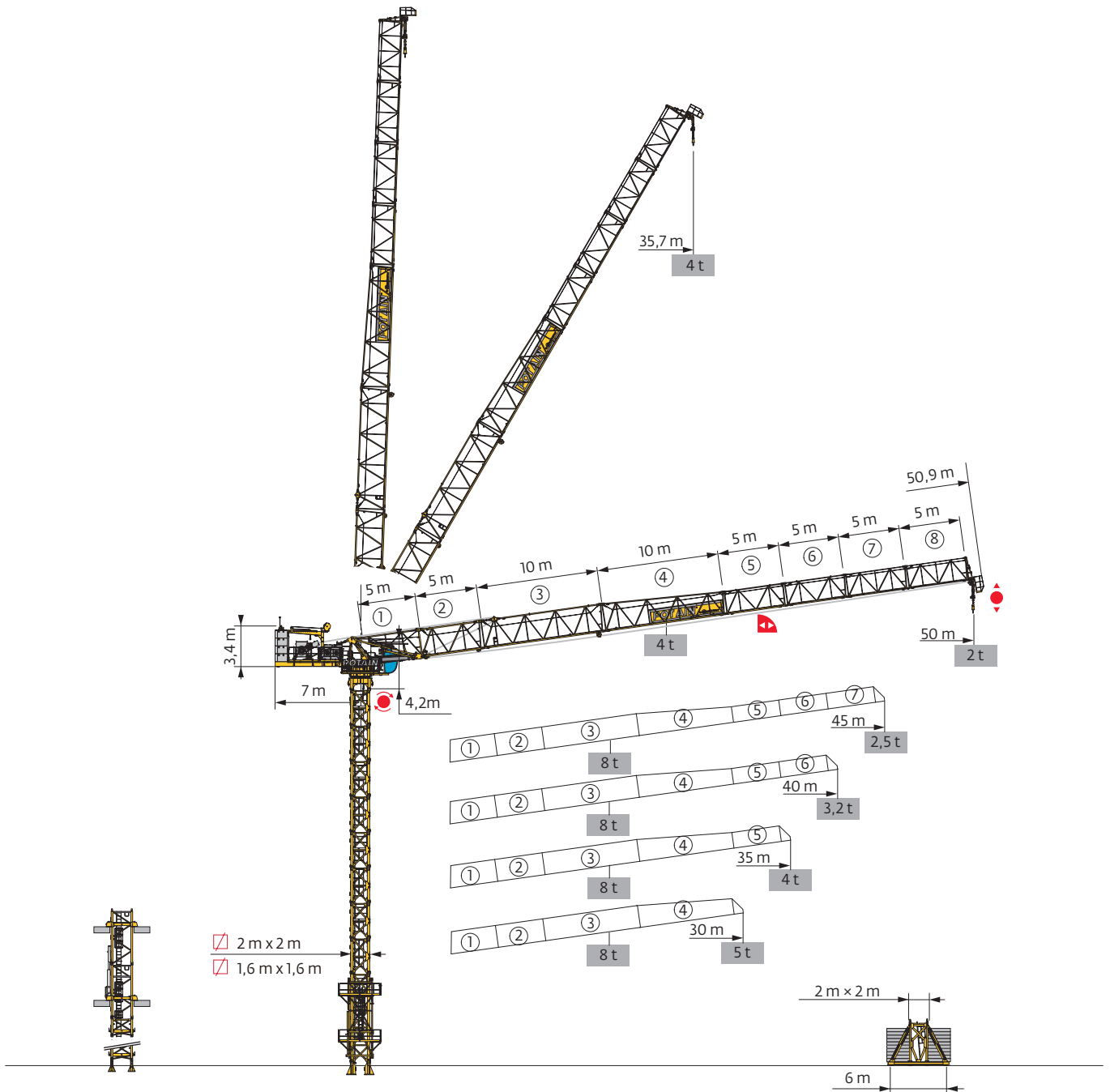
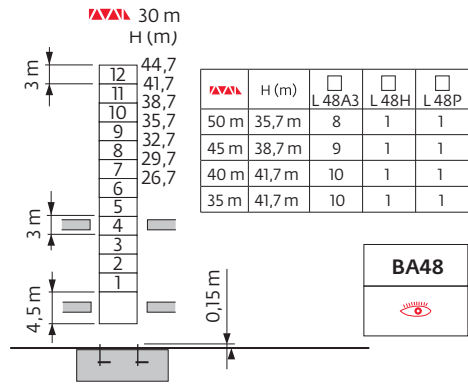
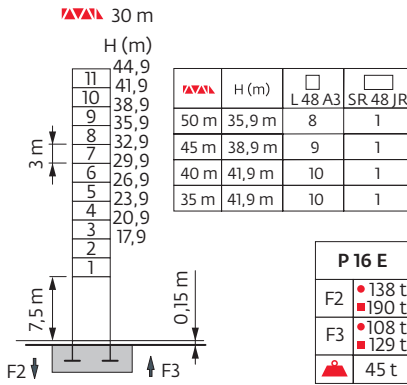


MCH 125

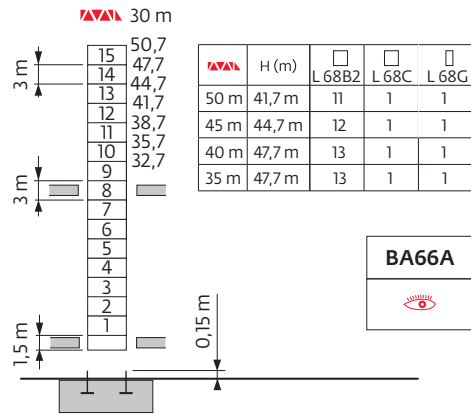
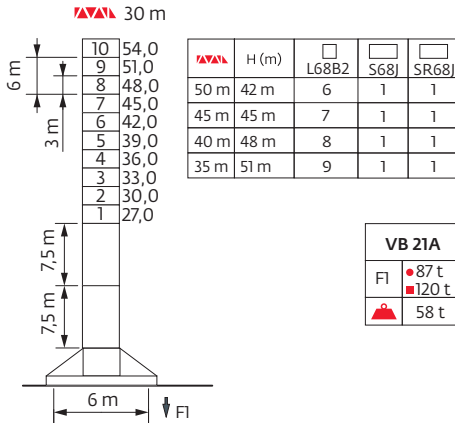
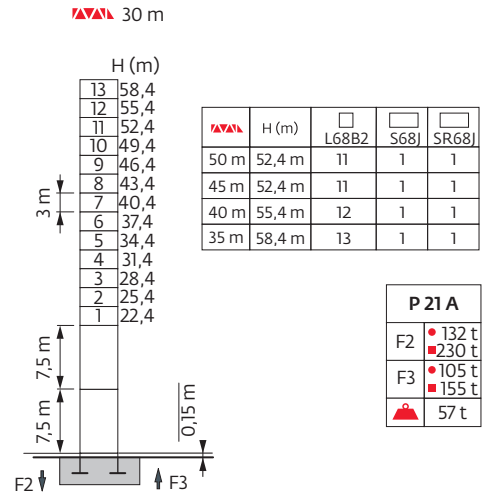
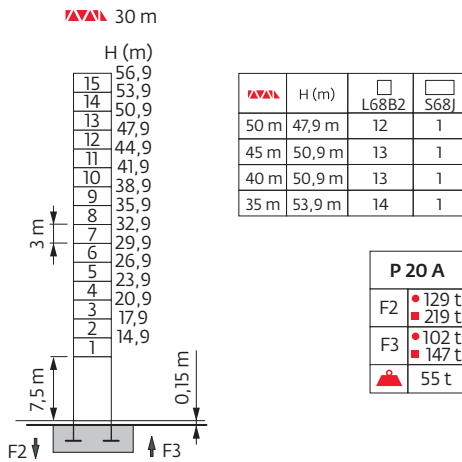


Mât - Réactions / Mast - Reaktionskräfte / Mast - Reactions / Mástil - Reacciones / Torre - Reazioni
 Tramo - Reaçções / Реакция опор мачты

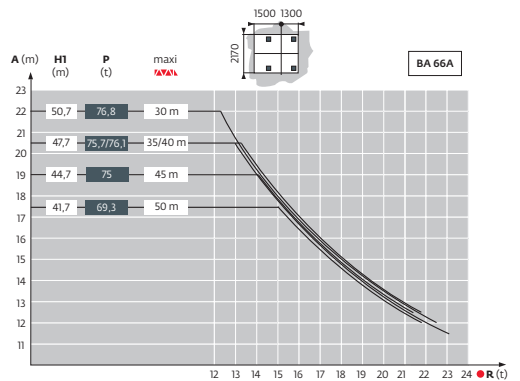
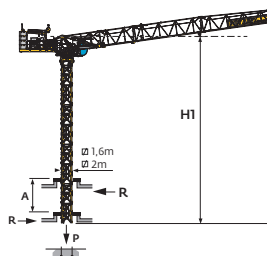
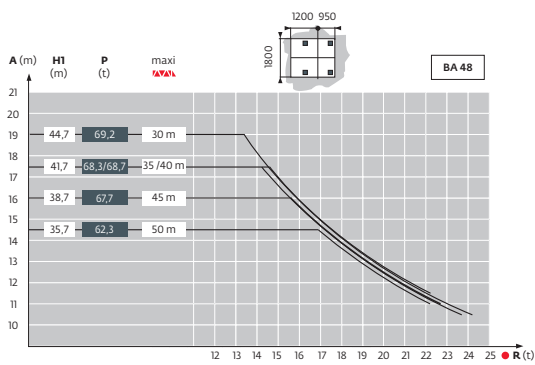
1,6 m



2 m

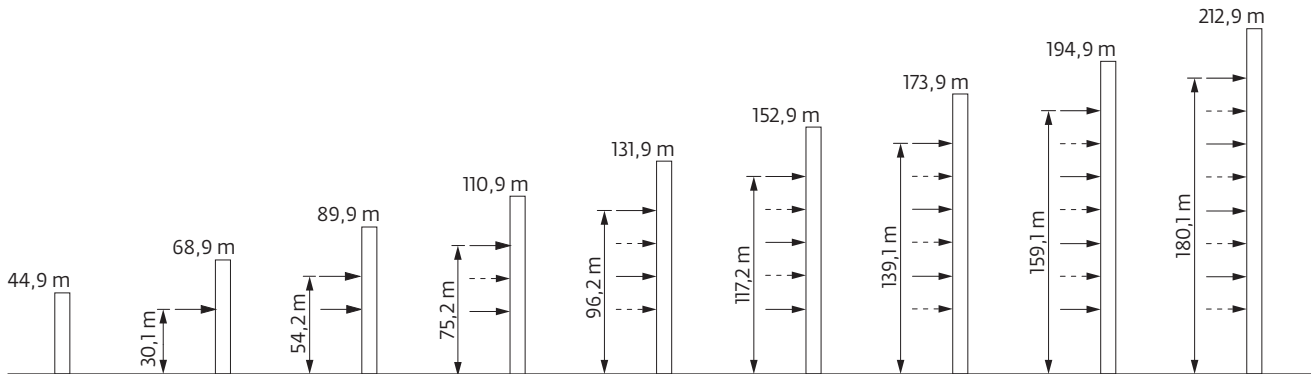


Télescopage sur dalles / Kletterkrane im Gebäude / Climbing Crane / Telescopage grua trepadora / Gru in cavedio
 Telescopagem sobre lages / Кран, ползущий внутри здания

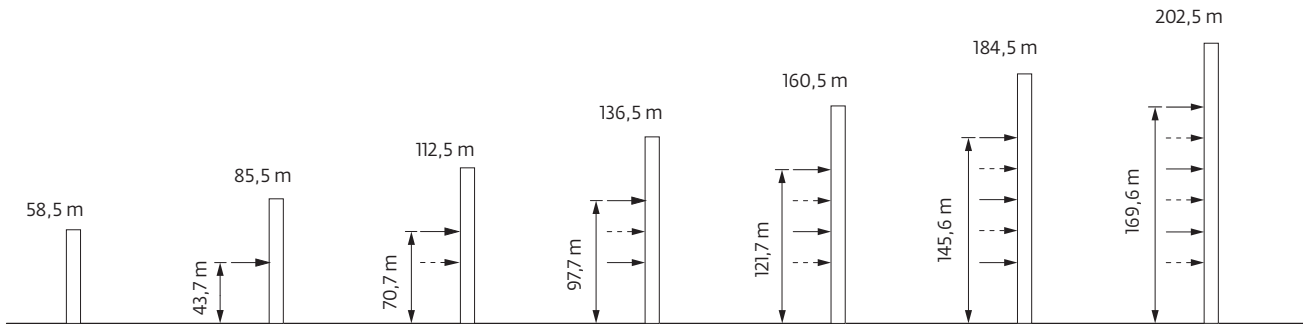


Anchages / Verankerungen / Anchorages / Anclajes / Ancoraggi
 Ancoragem / Анкера

P 16E **AL 401**  30 m





















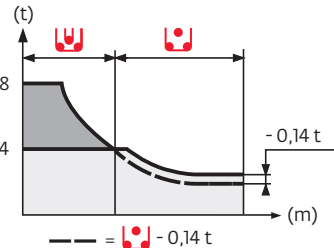
P 21A **AL 600**  30 m





Courbes de charges / Lastkurven / Load curves / Curvas de cargas / Curve di carico
 Curvas de carga / Кривые нагрузок



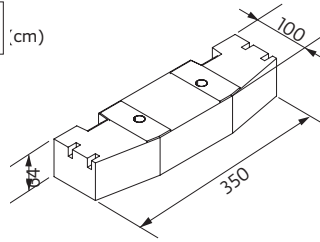
50 m	4,6																		35,7	37	40	42	45	47	50	m																						
																								4	3,7	3,2	2,95	2,55	2,3	2	t																	
45 m	4,3		21,6	22	25	27	30	32	33,4	34	35	35,3	37	40	42	45	m																															
				8	7,8	6,5	5,7	4,8	4,3	4	4	3,8	-	3,4	2,9	2,65	2,25	t																														
																							4	3,7	3,2	2,9	2,5	t																				
40 m	4,1		21,6	22	25	27	30	32	33,4	34,1	35	35,4	37	40	40,1	m																																
				8	7,8	6,5	5,7	4,8	4,3	4	4	3,8	-	3,4	2,95	2,95	t																															
																							4	3,7	3,2	3,2	t																					
35 m	3,8		22,5	25	27	30	32	-	-	35	35,1	m																																				
																								8	6,9	6,1	5,2	4,7	-	-	4	4	t															
																							4	t																								
30 m	3,5		22	25	27	30	30,2	m																																								
																								8	6,6	5,9	5	5	t																			
																							4	t																								






Lest de contre-flèche / Gegenauslegerballast / Counter-jib ballast / Lastre de contra-flecha / Zavorra di controbraccio
 Lastro da contra lança / Противовес стрелы

	4750 kg	 (kg)
30 m	4	19000
35 m	4	19000
40 m	4	19000
45 m	4	19000
50 m	4	19000

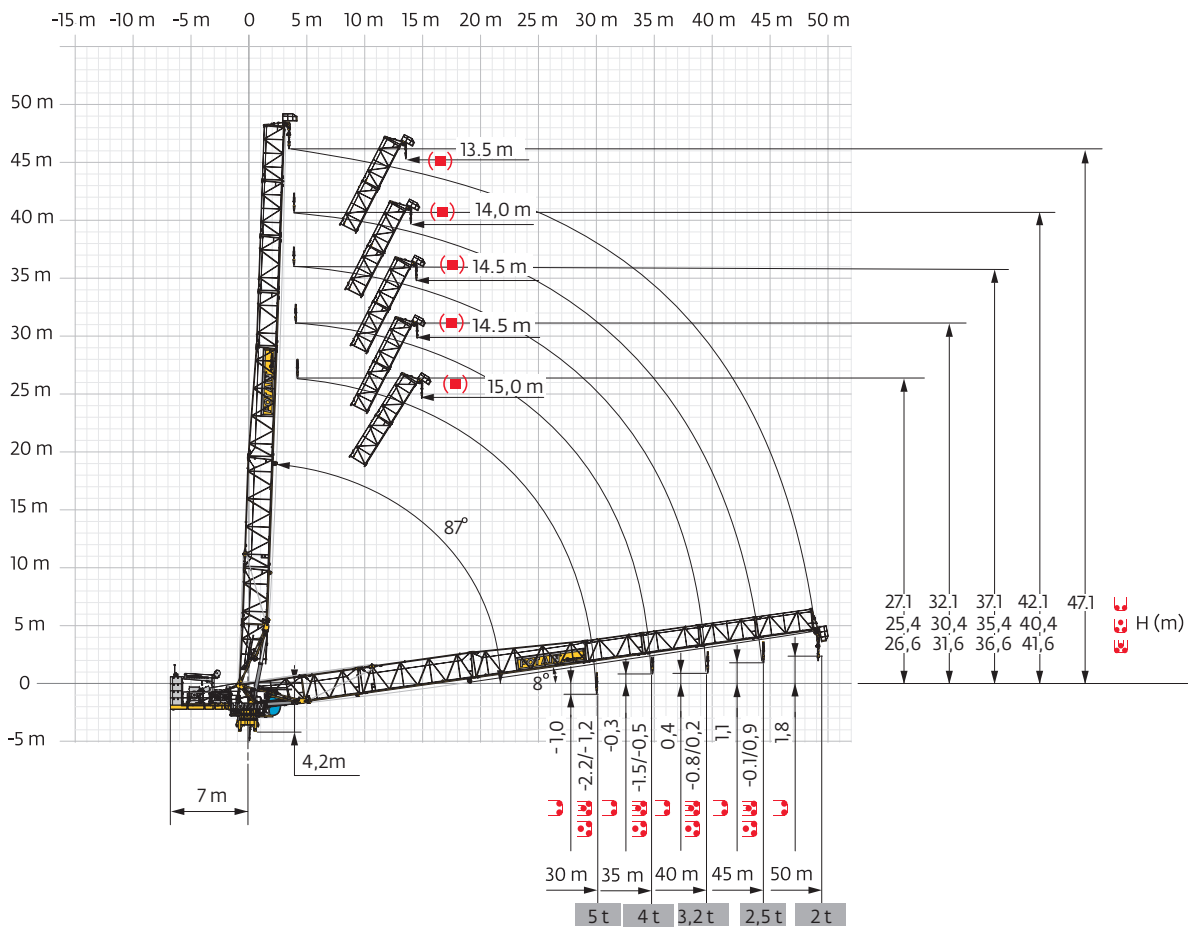
CCL - 4750 kg (cm)



Lest de base / Grundballast / Base ballast / Lastre de base / Zavorra di base
 Lastro da base / Базовый Балласт



	VB 21		30 m	35 m	40 m	45 m	50 m
2 m		H (m)	54	51	48	45	42
		 (t)	132	132	132	132	120

Flèche relevée / Ausleger in Steilstellung / Luffing jib / Flecha izada / Braccio impennato
 Lança inclinada / Маховая стрела



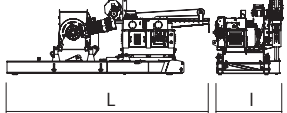
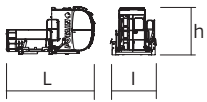
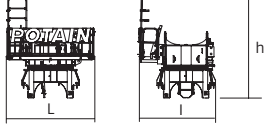
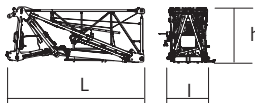
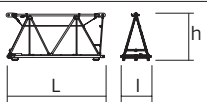
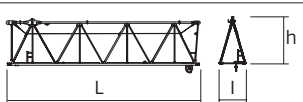

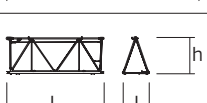
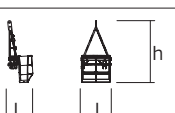
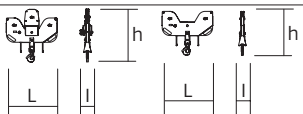

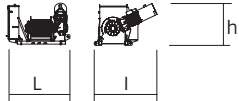
Encombremet et poids / Abmessungen und Gewicht / Dimensions and weight / Dimensiones y peso / Ingombro e peso
dimensões e pesos / габаритные размеры и вес

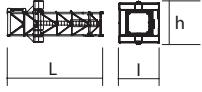
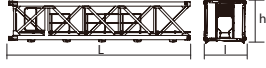
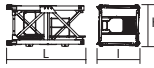
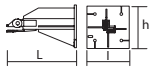
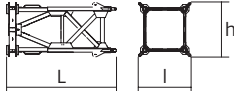
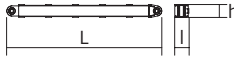
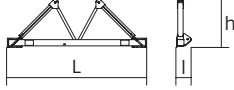
Partie tournante / Drehender Kranteil / Slewing crane part / Parte giratoria

Parte rotante / Parte rotativa / Поворотная часть :  50 m -  40LVF / 60LVF

 x 4

 x 4

Partie tournante / Drehender Kranteil / Slewing crane part Parte giratoria / Parte rotante / Parte rotativa Поворотная часть	L (m)	I (m)	h (m)	kg (+/- 5%)	
Contre-flèche / Gegenausleger Counter-jib / Contra-flecha Controbraccio / Contra-lança Контр-стрела 	40LVF 60LVF	6,63 6,63	2,18 2,18	2,47 2,47	5882 5982
Cabine / Kabine Cab / Cabina Cabina / Cabina Кабина 	V140SR	4,85	2,37	2,50	1800
Pivot / Krankopf Towerhead / Pivote Portaralla / Pivot Секция поворотной части 	1.6 m 2.0 m	3,17 3,17	2,8 2,8	3,6 3,6	5000 6200
Elément de flèche / Auslegerelement Jib section / Elemento de flecha Elemento di braccio / Elemento de lança Секция стрелы 	①	6,24	2,08	2,56	5901
Elément de flèche / Auslegerelement Jib section / Elemento de flecha Elemento di braccio / Elemento de lança Секция стрелы 	②	5,23	1,59	2,52	986
Elément de flèche / Auslegerelement Jib section / Elemento de flecha Elemento di braccio / Elemento de lança Секция стрелы 	③	10,25	1,44	2,5	1455
Elément de flèche / Auslegerelement Jib section / Elemento de flecha Elemento di braccio / Elemento de lança Секция стрелы 	④	10,21	1,42	2,37	1426
Elément de flèche / Auslegerelement Jib section / Elemento de flecha Elemento di braccio / Elemento de lança Секция стрелы 	⑤ ⑥ ⑦ ⑧	5,17 5,15 5,15 5,15	1,42 1,39 1,38 1,38	1,96 1,93 1,92 1,91	473 396 355 304
Elément de flèche / Auslegerelement Jib section / Elemento de flecha Elemento di braccio / Elemento de lança Секция стрелы 		1,23	1,48	3,05	180
Moufle / Hubflasche Pulley block / Aparejo Bozzello / Cadernal Полиспаст 		1,46 1,46	0,36 0,22	1,50 1,25	380 200
Treuil de levage (+ câble) / Hubwerk (+ Seil) Hoisting winch (+ rope) / Mecanismo de elevación (+ cabo) Argano di sollevamento (+ fune) Guincho de elevação (+ cabo) Подъемная лебедка (+ канатом) 	40 LVF 60 LVF	2,04 2,02	2,08 2,03	1,37 1,35	1439 1538

Equipement de télescope / Teleskopierausrüstung / Telescoping equipment Equipo de telescopaje / Equipaggiamento di telescopaggio / Equipamento de telescopagem Оборудование для телескопирования		L (m)	I (m)	h (m)	kg (+/- 5%)	
Cage de télescope / Teleskopwagen Telescopic cage / Jaula de telescopaje Gabbia di telescopaggio / Gaiola de telescopagem для телескопирования крана		□ 2 m □ 1,6 m	7,3 6,8	4,3 3,65	4,3 3,6	4605 3730
Mât / Mastwerk / Masts Mástil / Torre / Coluna Мачты						
S 68J SR 68J SR 48 JR		□ 2 m □ 2 m □ 1,6 m	7,74 7,74 7,8	2,1 2,1 1,8	2,1 2,1 1,7	4170 5175 3185
L 68 B3 L 48 A3		□ 2 m □ 1,6 m	3,26 3,24	2,12 1,67	2,12 1,73	1530 1363
Bases / Kranbasen / Crane bases Bases / Basi / Bases фундамент под кран						
Pieds de scellement / VerankerungsfüÙe Fixing angles / Pie de empotramiento Montante da annegare / Angulos fixadores анкера		P 16 E P 20 A P 21 A	1,3 1,4 1,3	0,8 0,6 0,8	0,8 0,6 0,8	500 300 500
Mât-châssis / Grundmasteinheit Basic mast unit / Tramo-chassis Elemento base / Tramo-chassis Мачта для крепления к шасси		VB 21 A	5,07	2,39	2,39	4360
Haubans / Mastabstützungen Struts / Tornapuntas Puntoni / Escoras Растяжка		VB 21 A	4,51	0,26	0,27	390
Sommier / Unterwagenhälfte Half-bearer / Testero Testata / Estrutura base Траверса		VB 21 A	6,7	0,7	2,31	1600

Mécanismes / Triebwerke / Mechanisms / Mecanismos / Meccanismi
Mecanismos / Механизмы

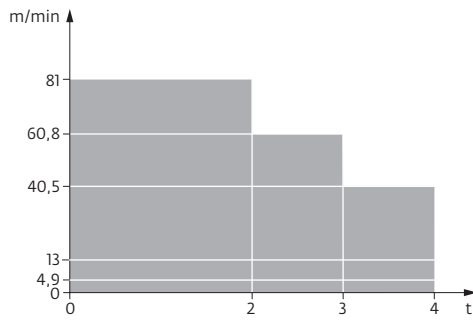
400 V - 50 Hz													hp	kW	
	40 LVF 20	m/min	4,9	13	40,5	60,8	81	2,5	6,5	20,3	30,4	40,5	40	30	456 m
		t	4	4	4	3	2	8	8	8	6	4			
	60 LVF 20	m/min	6	16	50	75	100	3	8	25	37,5	50	60	45	553 m
		t	4	4	4	3	2	8	8	8	6	4			
	40 VVH 80	min	2										40	30	
	RVF 152 Optima +	rpm	0 → 0,8										2 x 5,5	2 x 4	
VB 21A		m/min													

IEC 60204-32	kVA
400 V (+10% -10%) 50 Hz	40 LVF : 74 kVA 60 LVF : 90 kVA

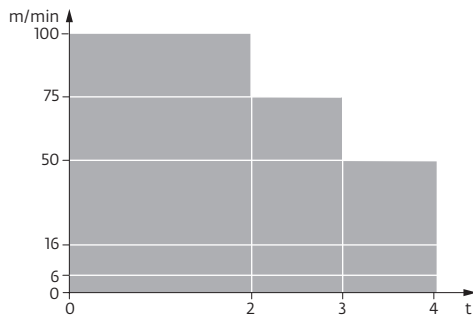
480 V - 60 Hz													hp	kW	
	40 LVF 20	m/min	4,9	13	40,5	60,8	81	2,5	6,5	20,3	30,4	40,5	40	30	456 m
		t	4	4	4	3	2	8	8	8	6	4			
	60 LVF 20	m/min	6	16	50	75	100	3	8	25	37,5	50	60	45	553 m
		t	4	4	4	3	2	8	8	8	6	4			
	40 VVH 80	min	2										40	30	
	RVF 152 Optima +	rpm	0 → 0,8										2 x 5,5	2 x 4	
VB 21A		m/min													

IEC 60204-32	kVA
480 V (+6% -10%) 60 Hz	40 LVF : 80 kVA 60 LVF : 96 kVA

40 LVF 20



60 LVF 20



FR

DE

EN

ES

IT

PT

RU

	Réactions en service	Reaktionskräfte in Betrieb	Reactions in service	Reacciones en servicio	Reazioni in servizio	Reacções em serviço	Реакция при работе
	Réactions hors service	Reaktionskräfte außer Betrieb	Reactions out of service	Reacciones fuera de servicio	Reazioni fuori servizio	Reacções fora de serviço	Реакция в покое
	A vide sans lest avec flèche et hauteur maximum	Gewicht ohne Last, ohne Ballast, mit Ausleger und max. Höhe	Weight without load, without ballast, with jib and max. height	Peso en vacío sin lastre, con flecha y altura máxima	Peso a vuoto, senza zavorra, con braccio e altezza massimi.	Peso em vazio sem lastro com lança e altura máxima.	Вес пустого, без балласта, со стрелой, максимальной высоты.
	Poids total du lest	Ballast-Gesamtgewicht	Total ballast weight	Peso total del lastre	Peso totale della zavorra	Peso total do lastro	Общий вес балласта
	Camion 13.4 m	Lkw 13.4 m	Lorry 13.4 m	Camión 13.4 m	Camion 13.4 m	Camião 13.4 m	Ррузовой автомобиль 13.4 м
	Conteneur High Cube 40"	Container High Cube 40"	Container High Cube 40"	Contenedor High cube 40"	Container High Cube 40"	Contentor 40"	Контейнер повышенной вместимости длиной 40"
	Cadre d'ancrage serré	Fester Verankerungsrahmen	Tightened anchorage frame	Marco de anclaje de apriete	Quadro di ancoraggio stretto	Quadro de amarração apertado	Прикрепленная анкерная рама
	Cadre d'ancrage desserré	Looser Verankerungsrahmen	Loosened anchorage frame	Marco de anclaje de desapriete	Quadro di ancoraggio allentato	Quadro de amarração solto	Отсоединенная анкерная рама
	Levage	Heben	Hoisting	Elevación	Sollevamento	Elevação	Подъем
	Relevage	AL-Verstellen	Luffing	Izado	Brandeggio	Levantamento	Маховый подъем
	Orientation	Schwenken	Slewing	Orientación	Rotazione	Rotação	Поворот
	Translation	Kranfahren	Travelling	Traslación	Traslazione	Translação	Перемещение крана
	Puissance nominale	Nennleistung	Rated power	Potencia nominal	Potenza nominale	Potência nominal	Номинальная мощность
	Voir télescopage sur dalles	Siehe Kletterkrane im Gebäude	See climbing crane	Vea grua trepadora	Consultare gru in cavedio	Ver telescopagem sobre lages	См. кран, ползущий внутри здания
	Nous consulter	Auf Anfrage	Consult us	Consultarnos	Consultateci	Consultar-nos	Проконсультируйтесь у нас

Document commercial non contractuel. Pour toute information technique se référer à la notice correspondante. Unverbindliches Vertriebsdokument. Für technische Informationen, siehe die entsprechenden Anweisungen. This commercial document is not legally binding. For any technical information, please refer to the corresponding instructions. Documento comercial no contractual. Para cualquier información técnica, ver la noticia correspondiente. Documento commerciale non vincolante, per tutte le informazioni tecniche fare riferimento al catalogo istruzioni. Documento comercial não contratual. Para qualquer informação técnica complementar consultar as respectivas instruções. Этот коммерческий документ не является юридически обязательным. Для получения технической информации, см. соответствующие инструкции.



Americas
Manitowoc, Wisconsin, USA
 Tel: +1 920 684 4410
 Fax: +1 920 652 9778

Shady Grove, Pennsylvania, USA
 Tel: +1 717 597 8121
 Fax: +1 717 597 4062

Europe, Middle East, Africa
Dardilly, France
 Tel: +33 (0)4 72 18 20 20
 Fax: +33 (0)4 72 18 20 00

China
Shanghai, China
 Tel: +86 21 6457 0066
 Fax: +86 21 6457 4955

Greater Asia-Pacific
Singapore
 Tel: +65 6264 1188
 Fax: +65 6862 4040

www.manitowoccranes.com

©2018 The Manitowoc Company, Inc.

Ref. 02D_FEM1001mt_MCH125_2018_02-0