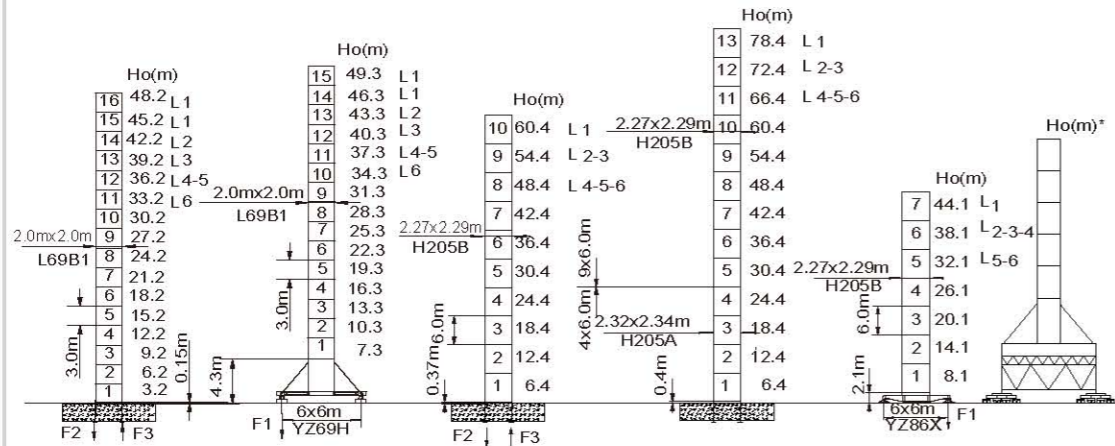
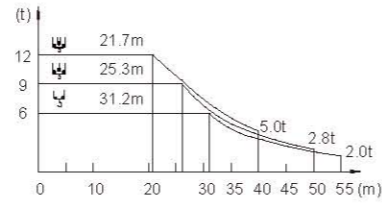


動臂系列

# STL230

## 18/16/12t

12t	R (m)	倍率 Fall	R(C <sub>max</sub> ) (m)	C <sub>max</sub> (t)	15	20	25	30	35	40	45	50	55
55	1.5	U	31.2	6.00	6.00	6.00	6.00	6.00	4.97	3.95	3.15	2.52	2.00
			34.6	6.00	6.00	6.00	6.00	6.00	5.90	4.73	3.82	3.10	
50	1.5	U	25.3	9.00	9.00	9.00	9.00	7.06	5.54	4.40	3.51	2.80	
			36.4	6.00	6.00	6.00	6.00	6.00	6.00	5.12	4.20		
45	1.5	U	26.5	9.00	9.00	9.00	9.00	7.53	5.97	4.80	3.90		
			35.7	6.00	6.00	6.00	6.00	6.00	6.00	5.00			
40	1.5	U	27.5	9.00	9.00	9.00	9.00	7.97	6.38	5.20			
			21.7	12.00	12.00	12.00	9.96	7.75	6.18	5.00			
35	1.5	U	35.0	6.00	6.00	6.00	6.00	6.00	6.00	6.00	6.00		
			26.5	9.00	9.00	9.00	9.00	8.16	6.60				
30	1.5	U	21.7	12.00	12.00	10.12	7.95	6.40					
			30.0	6.00	6.00	6.00	6.00	6.00	6.00	6.00			
30	1.5	U	27.2	9.00	9.00	9.00	9.00	8.60					
			21.8	12.00	12.00	12.00	10.60	8.40					



F2	194t	223t	F1	104t	105t	F2	208t	293t	F1	105t	106t
F3	143t	194t				F3	141t	239t			
	78.5t			92.5t			99t			102t	

● 工作狀態支反力 In service reaction    ■ 非工作狀態支反力 Out of service reaction  
 ⊗ 整機自由高度重量 (不含平衡重及壓重重量) Total weight of free standing crane (excludes counter weight & ballast.)

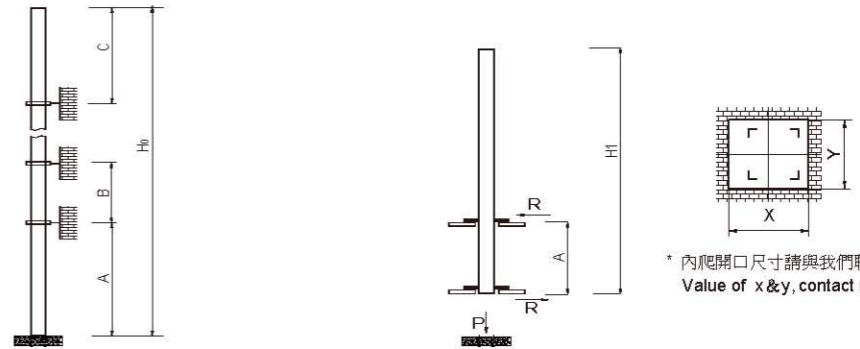
Luffing STL230



YONGMAO HOLDINGS LIMITED

# STL230

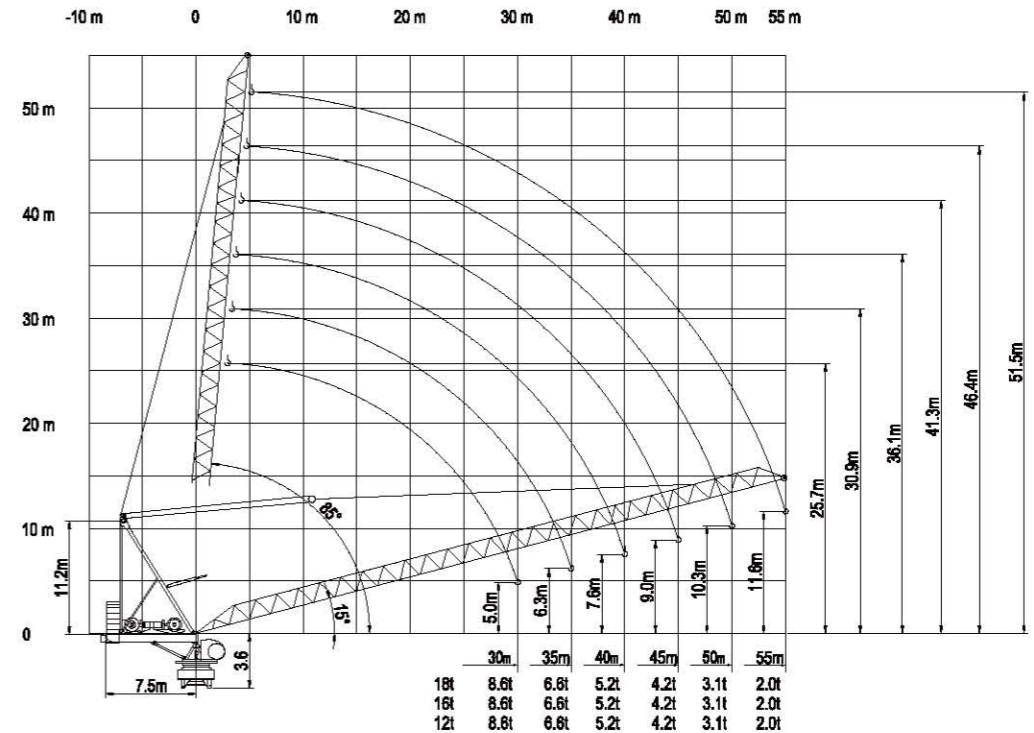
## 18/16/12t



塔身節 Mast	臂長 Jib length	A (m)	B (m)	C (m)	H <sub>0</sub> (m)
H205B	L1-3	30/48	24/36	32	>400
	L4-5	30/42	24/30	30	
	L6	30/42	24/30	28	
L69B1	L1	41	35	42	>350
	L2	35	29	36	
	L3	32	26	33	
	L4-5	29	23	30	
	L6	26	20	27	

塔身節 Mast	臂長 Jib length	H <sub>1</sub> (m)	A (m)	P (t)	R (t)
H205B	L1	60	18	124	47
	L2-3	54		121	
	L4-6	48		116	
L69B1	L1	49.5	12-15	110	41.5
	L2	43.5			
	L3	43.5			
	L4-5	40.5			
	L6	37.5			

附著道數 Number of tie collars=(H<sub>0</sub>-A-C)/B+1



1 8 7

Luffing STL230  
Luffing STL230



YONGMAO HOLDINGS LIMITED

# STL230

## 18/16/12t

# STL230

## 18/16/12t

動臂系列

主要性能參數 Specifications

機構 Mechanism									電動機 Motor kW		
		m/min	t	m/min	t	m/min	t				
▲ ▼	18t	75LFV45DB1 ☆		0-40 0-96 0-160	9.0 3.0 1.0	0-26 0-64 0-106	13.5 4.5 1.5	0-20 0-48 0-80	18.0 6.0 2.0	1030m > 1030m*	75
		75LFV45		0-38 0-46 0-76	9.0 6.0 3.0	0-25 0-30 0-50	13.5 9.0 4.5	0-19 0-23 0-38	18.0 12.0 6.0	550m	75
	16t	75LFV40		0-47 0-57 0-95	8.0 6.0 3.0	0-31 0-37 0-63	12.0 9.0 4.5	0-24 0-28 0-47	16.0 12.0 6.0	550m <sub>±</sub> > 550m	75
		55LFV30		0-44 0-53 0-88	6.0 4.0 1.7	0-30 0-40 0-60	9.0 6.0 2.6	0-22 0-27 0-44	12.0 8.0 3.5	630m > 630m*	55
	45DFV40B		15°-85° 2.0min						45		
	RTC240		0-0.7 rpm						2x 120 N.m		
	RT		12.5-25 m/min						4x 2.6/5.2		

裝機容量 Power supply	kVA
380V (± 10%) 50 Hz	75LFV45DB1 : 180      75LFV45 , 75LFV40 : 165 55LFV30 : 140

\* 與製造商聯繫 Contact us, please.  
☆ 标准配置 Standard configuration.

本技术参数不受法律约束，技术信息请详见相应说明书。  
Specifications and data are not legally binding. For any technical information, please refer to corresponding instructions.



YONGMAO HOLDINGS LIMITED

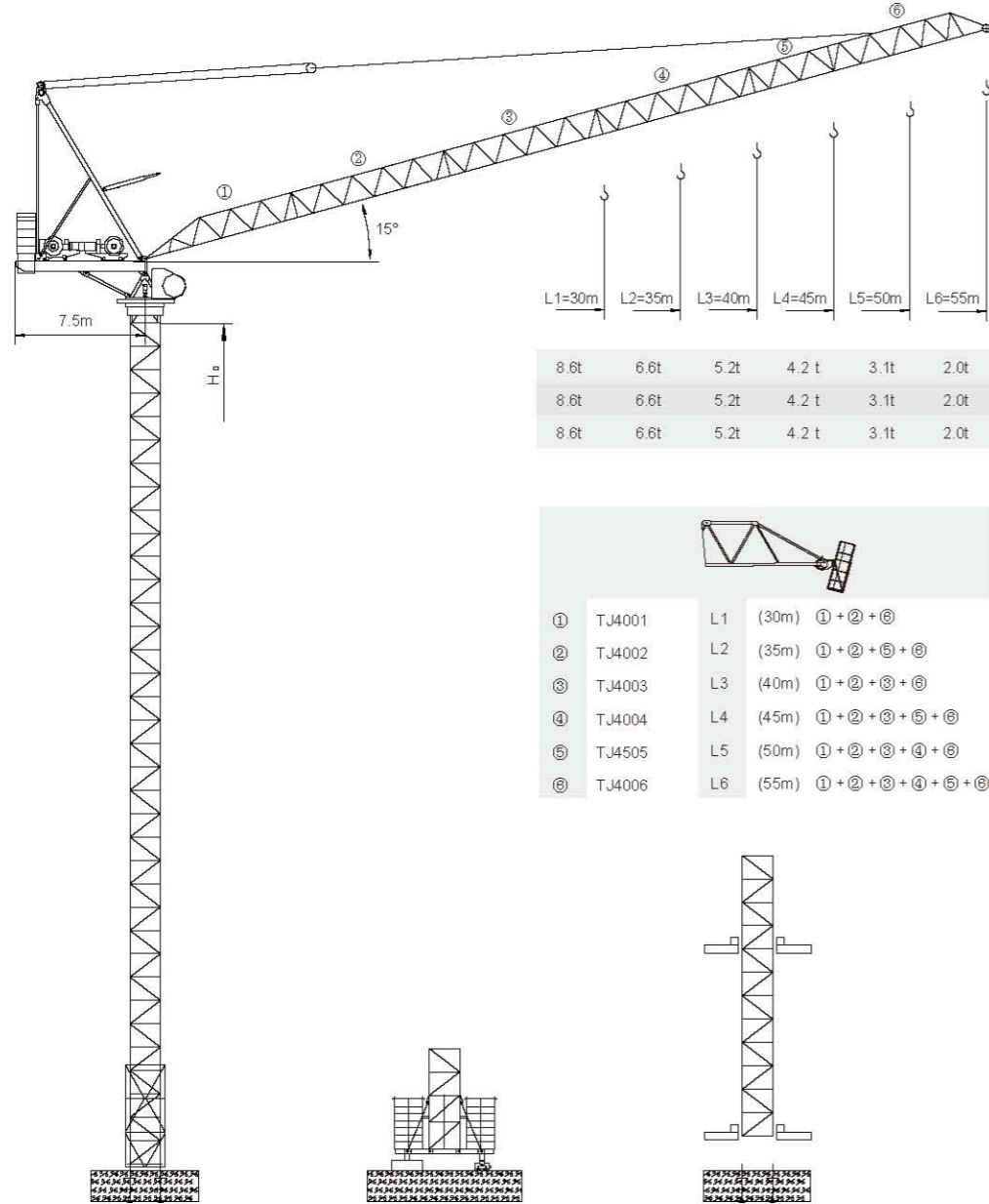


YONGMAO HOLDINGS LIMITED

Luffing STL230  
Luffing STL230

# 永茂建机 YONGMAO

## STL230 18/16/12t



# 動臂系列

1 1  
8 8  
5 6

Luffing  
V 4.0-29082012

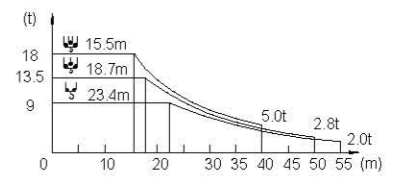


## STL230 18/16/12t

載荷表 Load Chart

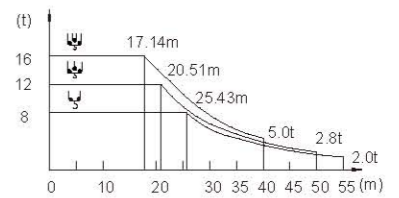
18t

R (m)	倍率 Fall	R(C <sub>max</sub> ) (m)	C <sub>max</sub> (t)	15	20	25	30	35	40	45	50	55
55	↓	23.4	9.00	9.00	9.00	8.20	6.33	4.97	3.95	3.15	2.52	2.00
50	↓	26.3	9.00	9.00	9.00	9.00	7.46	5.90	4.73	3.82	3.10	
	↓	18.7	13.50	13.50	12.39	9.19	7.06	5.54	4.40	3.51	2.80	
45	↓	27.8	9.00	9.00	9.00	9.00	7.90	6.31	5.12	4.20		
	↓	19.3	13.50	13.50	12.31	9.70	7.53	5.97	4.80	3.90		
40	↓	26.9	9.00	9.00	9.00	9.00	7.75	6.18	5.00			
	↓	19.9	13.50	13.50	13.41	10.19	7.97	6.38	5.20			
35	↓	27.2	9.00	9.00	9.00	9.00	7.95	6.40				
	↓	20.1	13.50	13.50	13.50	10.34	8.16	6.60				
30	↓	28.3	9.00	9.00	9.00	9.00	8.40					
	↓	20.7	13.50	13.50	13.50	10.81	8.60					
	↓	16.0	18.00	18.00	13.91	10.60	8.40					



16t

R (m)	倍率 Fall	R(C <sub>max</sub> ) (m)	C <sub>max</sub> (t)	15	20	25	30	35	40	45	50	55
55	↓	25.43	8.00	8.00	8.00	8.00	6.33	4.97	3.95	3.15	2.52	2.00
50	↓	28.52	8.00	8.00	8.00	8.00	7.46	5.90	4.73	3.82	3.10	
	↓	20.51	12.00	12.00	12.00	9.19	7.06	5.54	4.40	3.51	2.80	
45	↓	29.77	8.00	8.00	8.00	8.00	7.90	6.31	5.12	4.20		
	↓	20.55	12.00	12.00	12.00	9.70	7.53	5.97	4.80	3.90		
40	↓	29.30	8.00	8.00	8.00	8.00	7.75	6.18	5.00			
	↓	21.98	12.00	12.00	12.00	10.19	7.97	6.38	5.20			
35	↓	17.14	16.00	16.00	13.26	9.96	7.75	6.18	5.00			
	↓	29.85	8.00	8.00	8.00	8.00	7.95	6.40				
30	↓	22.20	12.00	12.00	12.00	10.34	8.16	6.60				
	↓	17.19	16.00	16.00	13.37	10.12	7.95	6.40				
	↓	30.00	8.00	8.00	8.00	8.00	8.00					
	↓	22.93	12.00	12.00	12.00	10.81	8.60					
	↓	17.75	16.00	16.00	13.91	10.60	8.40					



Luffing STL230

Luffing STL230  
Luffing STL230