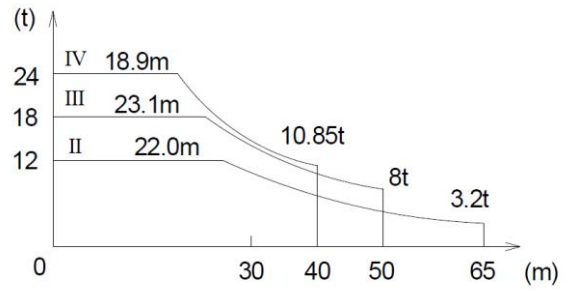


Luffing

### Load Chart

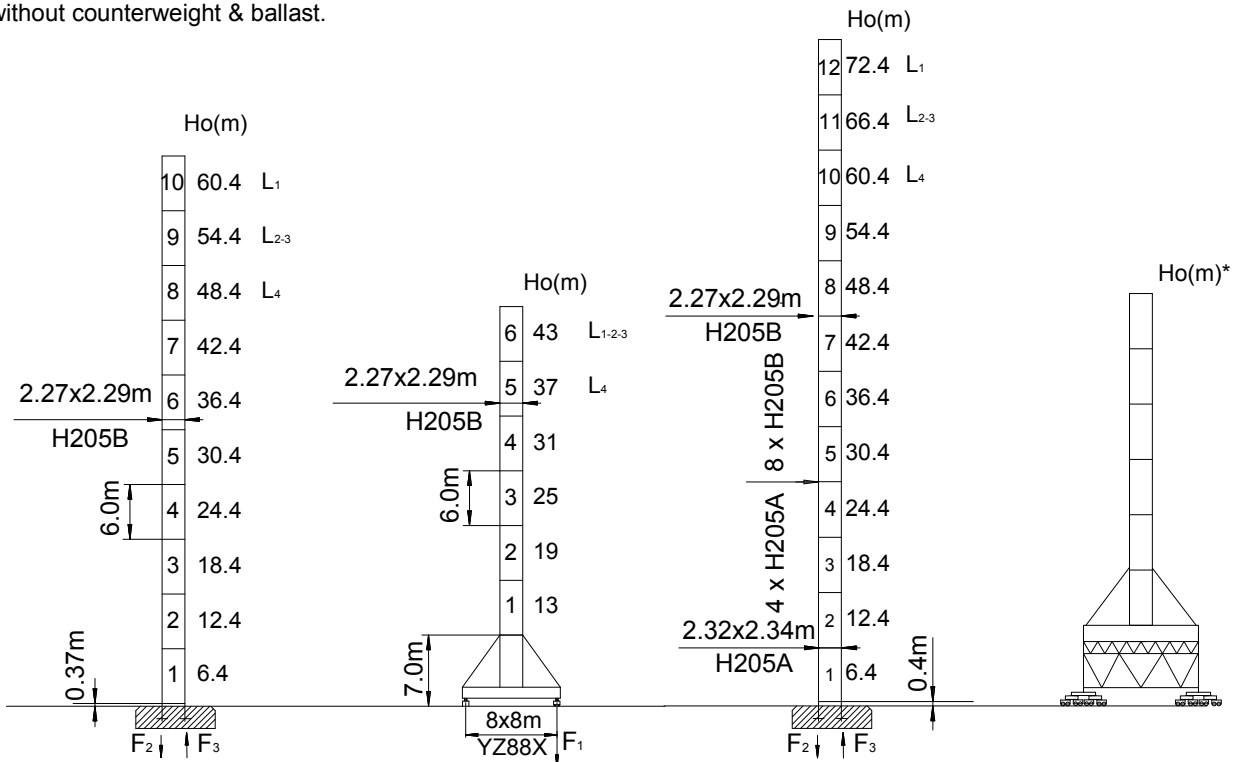
R (m)	倍率 Fall	R(C <sub>max</sub> ) (m)	C <sub>max</sub> (t)	20	22	24	26	28	30	32	34	36	38	40	45	50	55	60	65
65	☹	22.0	12.0	12.00	12.00	10.90	10.00	9.20	8.50	7.90	7.30	6.90	6.40	6.10	5.20	4.60	4.10	3.60	<b>3.20</b>
60	☹	25.7	12.0	12.00	12.00	12.00	11.84	10.99	10.23	9.56	8.98	8.45	7.99	7.57	6.68	5.97	5.38	<b>4.90</b>	
50	☹	32.9	12.0	12.00	12.00	12.00	12.00	12.00	12.00	12.00	11.59	10.90	10.27	9.71	8.53	<b>7.60</b>			
	☹	23.1	18.0	18.00	18.00	17.26	15.89	14.72	13.70	12.81	12.02	11.33	10.70	10.14	8.95	<b>8.00</b>			
40	☹	36.3	12.0	12.00	12.00	12.00	12.00	12.00	12.00	12.00	12.00	12.0	11.43	<b>10.85</b>					
	☹	25.3	18.0	18.00	18.00	18.00	17.53	16.24	15.12	14.14	13.28	12.51	11.82	<b>11.24</b>					
30	☹	18.9	24.0	22.66	20.52	18.74	17.23	15.94	14.73	13.75	12.89	12.12	11.43	<b>10.85</b>					
	☹	30.0	12.0	12.00	12.00	12.00	12.00	12.00	12.00	12.00	12.00	12.00	12.00	<b>12.00</b>					
30	☹	26.1	18.0	18.00	18.00	18.00	18.00	18.00	16.75	<b>15.64</b>									
	☹	19.4	24.0	23.29	21.09	19.25	17.70	16.36	<b>15.25</b>										



● Reaction in service

■ Reaction out of service

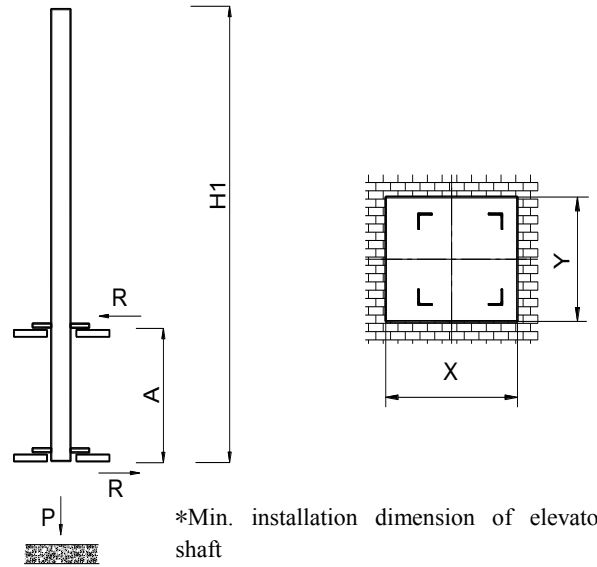
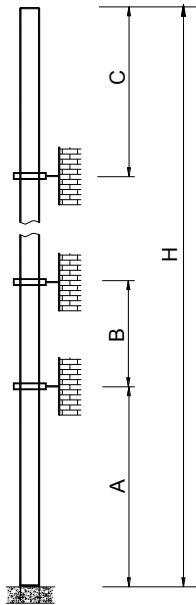
⊗ Total weight for free standing crane without counterweight & ballast.



	●	■
F2	250t	267t
F3	161t	200t
⊗	120t	

	●	■
F1	114t	119t
⊗	126t	

	●	■
F2	281t	373t
F3	191t	295t
⊗	136t	



\*Min. installation dimension of elevator shaft

Mast	Jib length	A (m)	B (m)	C (m)	H (m)
H205B	L1	30/48	24/36	32	400 >400*
	L2-3	30/42	24/30	30	
	L4-L5	30/42	24/30	28	

Mast	Jib length	H1 (m)	A (m)	P (t)	R (t)
H205B	L1	60	18	160	34
	L2-3-5*	48		158	32
	L4-5	42		155	31

### Main Specifications

Mechanism								Motor kW	
	m/min	t	m/min	t	m/min	t			
	90LFV60DB1	0-40	12.0	0-26	18.0	0-20	24.0	1030m >1030m*	90
		0-96	4.0	0-64	6.0	0-48	8.0		
		0-160	1.0	0-106	1.5	0-80	2.0		
	90LFV60B	0-38	12.0	0-25	18.0	0-19	24.0	550m >550m*	90
		0-46	10.0	0-30	15.0	0-23	20.0		
		0-72	4.0	0-48	6.0	0-36	8.0		
	90DFV60B	15°-85° 3.0min							90
	7.5RFCV	0-0.8 rpm							2x7.5
	RTC290	0-0.8 rpm							2x145 N·m
	RT	12.5-25 m/min							4x2.6/5.2

Power Supply	kVA
380V (±10%) 50 Hz / 60 Hz	90LFV60DB1: 270 90LFV60B: 245

\* ※ Contact with us, please.

Copy Right ©YONGMAO 2010



ISO9001:2000



**YONGMAO HOLDINGS LIMITED**