

AUXILLARY

Telescopic Spreader Beam



Manufacturer - Maxirig

Model ETB206 20t

Designed for a variety of heavy lifting applications, designed to function in the 60°, 90° and 120° positions.

Beam is certified to AS4991-2004.

Lifting capacity 20t @ 4.0m to 6.0m when using the 60° slinging position

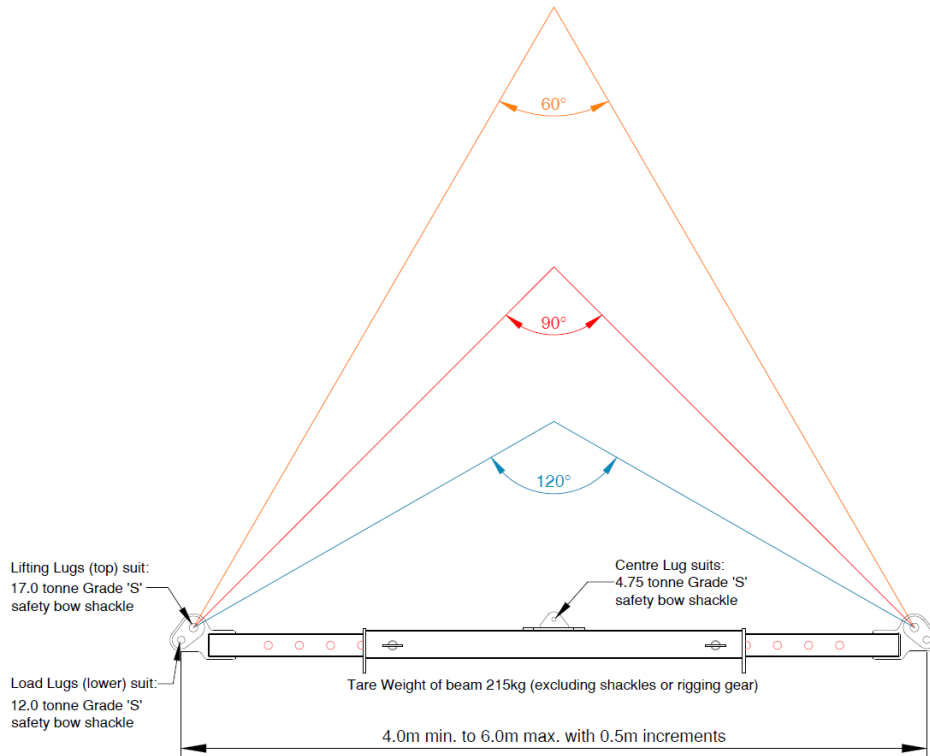
Each beam is supplied with lifting gear and safety shackles.

Each beam is provided with full handover and SOP.

Specifications

- Easy to use and operate.
- Certified lifting gear supplied.

Spec Sheet
Telescopic Spreader Beam



LOAD CHART

Span (Metres)	WLL (tonnes)				Approx Sling Leg Length			Approx Headroom		
	60°	90°	120°	CENTRE LIFT	60°	90°	120°	60°	90°	120°
4.0m	20.0t	14.0t	8.0t	2.1t	4.0t	2.8t	2.3t	3.5m	2.0m	1.2m
4.5m	20.0t	14.0t	8.0t	1.9t	4.5t	3.2t	2.6t	3.9m	2.3m	1.3m
5.0m	20.0t	14.0t	8.0t	1.7t	5.0t	3.5t	2.9t	4.3m	2.5m	1.4m
5.5m	20.0t	14.0t	8.0t	1.5t	5.5t	3.9t	3.2t	4.8m	2.8m	1.6m
6.0m	20.0t	14.0t	8.0t	1.3t	6.0t	4.2t	3.5t	5.2m	3.0m	1.7m

This spec sheet is provided for information only and is subject to change.